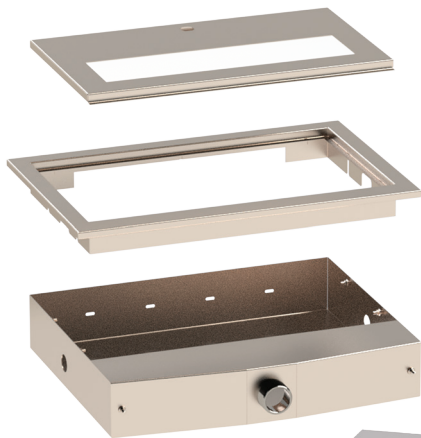


# Recessed Single Backflow Cabinet, SCABR

## FEATURES

- Suitable for 1 x 15, 20 or 25mm Watts Double Check Valves or 1 x 15, 20 or 25mm Reduced Pressure Zone Devices (Refer to individual valve specification sheets for product details)
- Manufactured from #304 grade stainless steel
- 40mm waste connection standard
- Suits many applications
- Unique design benefits
- Lockable front access panel
- Vent slots at top of cabinet to avoid condensation
- 4 x Adjustable brackets supplied

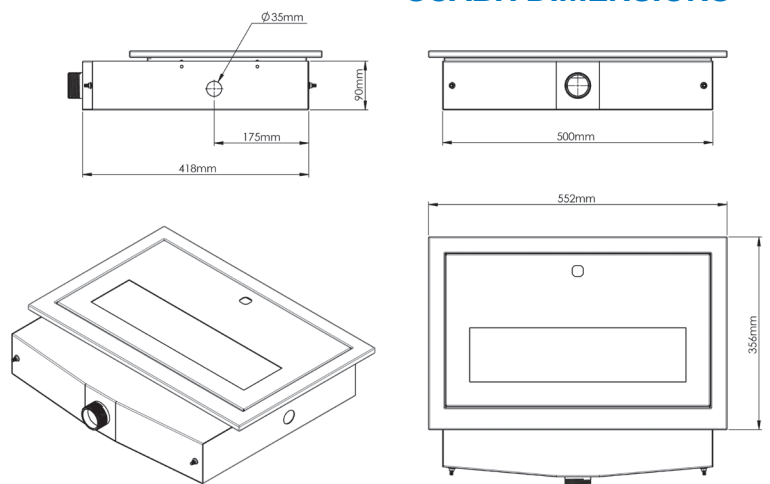


**4 ADJUSTABLE BRACKETS**



PRODUCT CODE	BACKFLOW CABINETS STAINLESS STEEL & VALVES
007-015-SCABR	15MM DCV SINGLE VALVE IN SS RECESSED CABINET - WATTS
007-020-SCABR	20MM DCV SINGLE VALVE IN SS RECESSED CABINET - WATTS
007-025-SCABR	25MM DCV SINGLE VALVE IN SS RECESSED CABINET - WATTS
009-015-SCABR	15mm RPZ SINGLE VALVE IN SS RECESSED CABINET - WATTS
009-020-SCABR	20mm RPZ SINGLE VALVE IN SS RECESSED CABINET - WATTS
009-025-SCABR	25mm RPZ SINGLE VALVE IN SS RECESSED CABINET - WATTS

## SCABR DIMENSIONS



DISCLAIMER: Every care has been taken in the preparation of these instructions, which have been issued as a guide only. Compliance with the requirements of local Authorities is required at all times. These requirements may change from time to time. Always be aware of the local requirements. Subject to any statutory obligations and manufacturers warranties no liability can be accepted for any losses, consequential or otherwise which may arise or be said to have arisen from relying upon the contents of this installation instruction as to the fitness of any particular product for any particular purpose, use or application. The Australian Valve Group Pty Ltd reserves the right to modify designs and specifications and to withdraw and introduce products at any time without notice.